

# University of Wisconsin Oshkosh Fraternity/Sorority Life



Fall 2012 Report

# Table of Contents

<b>Section</b>	<b>Pg. #</b>
<b>Academic/Membership Report .....</b>	<b>3</b>
Fall 2012 Academic/Membership Report .....	3
Community GPA Trends .....	4
Sorority GPA Trends .....	5
Fraternity GPA Trends .....	6
<b>Community Membership Trends .....</b>	<b>7</b>
Community Membership Trends .....	7
Fraternity Average Membership Trends .....	8
Sorority Average Membership Trends .....	.9
<b>Community Service/Philanthropy Report .....</b>	<b>10</b>
Fall 2012 Community Service/Philanthropy Report .....	10

# Fall 2012 Academic/Membership Report

Fall 2012	Size	Actives	NM	NM GPA	Active GPA	All GPA	Rank
Beta Theta Pi # *	29	24	5	3.09	2.96	2.98	1
Delta Sigma Phi	29	14	15	2.38	2.42	2.40	4
Omega Delta Phi	7	5	2	1.00	2.44	2.00	3
Sigma Pi	19	12	7	2.48	2.95	2.78	2
Sigma Tau Gamma	10	7	3	2.06	2.68	2.51	5
<b>All-Fraternity Average</b>	<b>18.80</b>	<b>12.40</b>	<b>6.20</b>	<b>2.41</b>	<b>2.77</b>	<b>2.68</b>	
<b>All-Fraternity Totals</b>	<b>94</b>	<b>62</b>	<b>32</b>				

# - Above All Men's/All Women's Average

\* - Above All-University Average

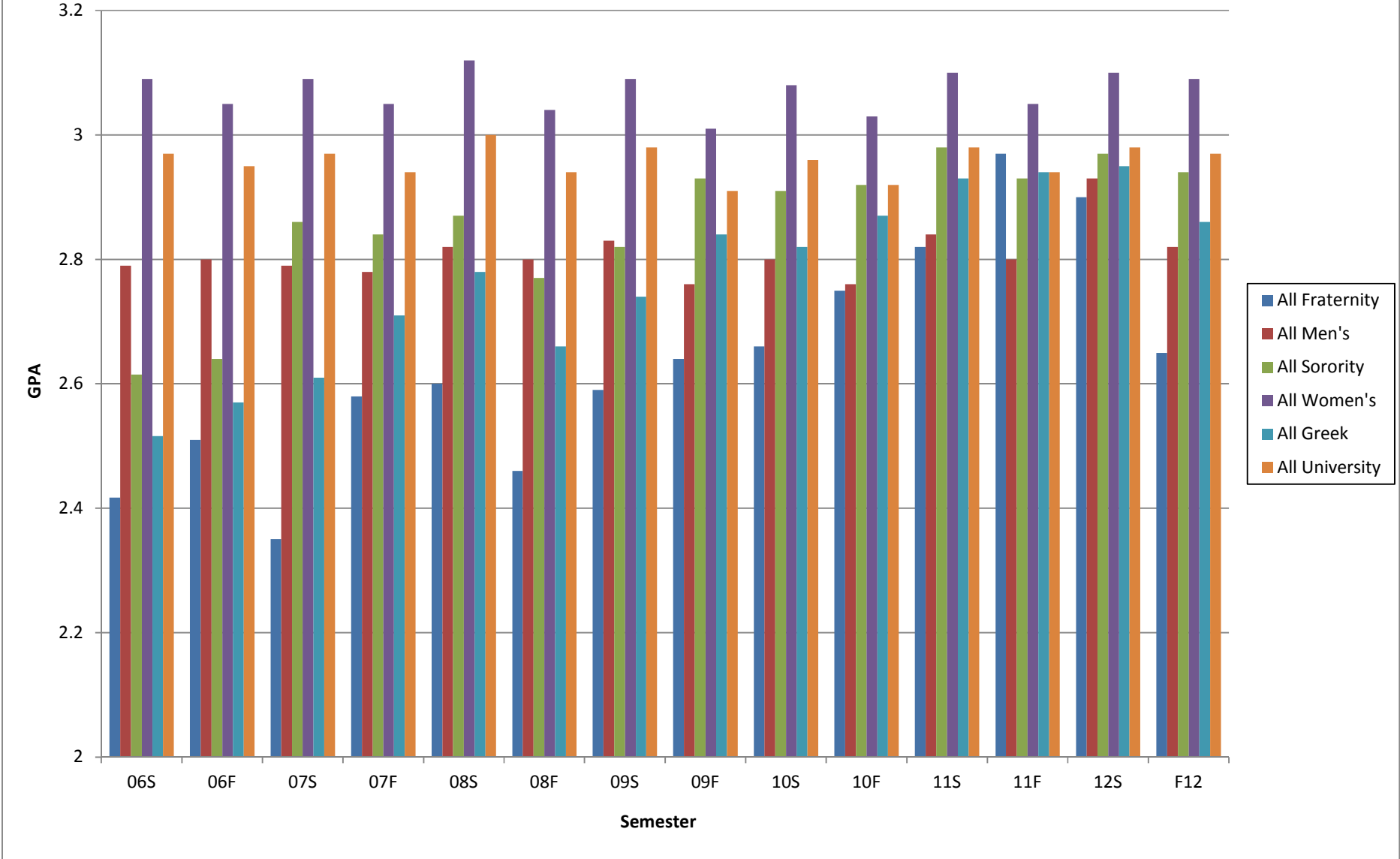
^ - Most Improved GPA

Alpha Xi Delta *	46	32	14	2.40	3.18	2.95	2
Gamma Alpha Omega # *	8	8	0	N/A	3.28	3.28	1
Gamma Phi Beta	39	24	15	2.75	3.03	2.92	4
Zeta Tau Alpha ^	52	40	12	2.93	2.93	2.93	3
Sigma Sigma Sigma	51	40	11	2.76	2.94	2.90	5
<b>All-Sorority Average</b>	<b>39.20</b>	<b>28.80</b>	<b>10.40</b>	<b>2.70</b>	<b>3.03</b>	<b>2.94</b>	
<b>All-Sorority Totals</b>	<b>193</b>	<b>142</b>	<b>51</b>				

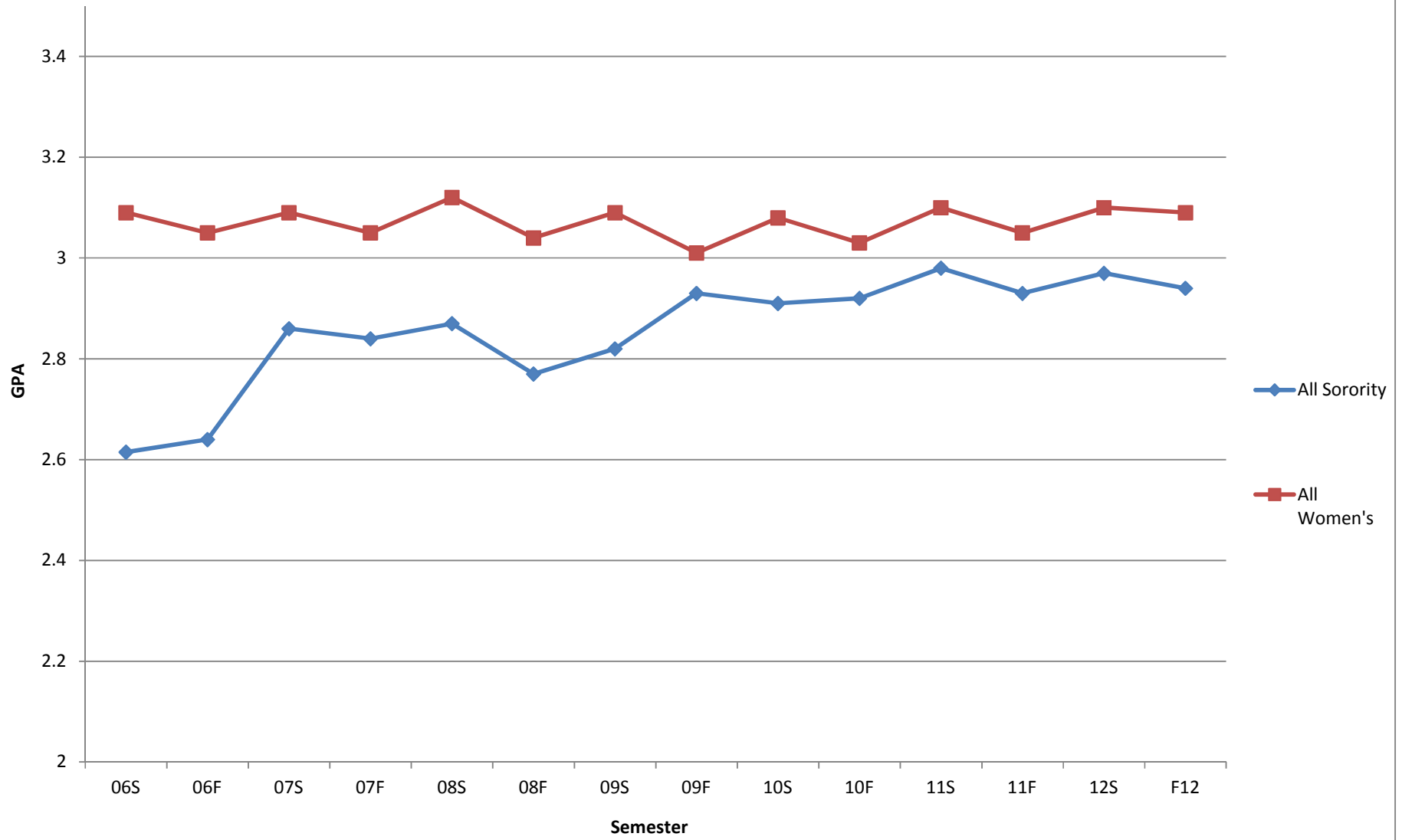
<b>All-Greek Average</b>	<b>290</b>	<b>206</b>	<b>84</b>	<b>2.593</b>	<b>2.956</b>	<b>2.85</b>
<b>All-Men's Average</b>	<b>5122</b>					<b>2.82</b>
<b>All-Women's Average</b>	<b>7262</b>					<b>3.09</b>
<b>All-University Average</b>	<b>12384</b>					<b>2.97</b>

<b>Greek % of Population</b>	<b>2.34%</b>
<b>Sorority % of Population</b>	<b>3.70%</b>
<b>Fraternity % of Population</b>	<b>1.84%</b>

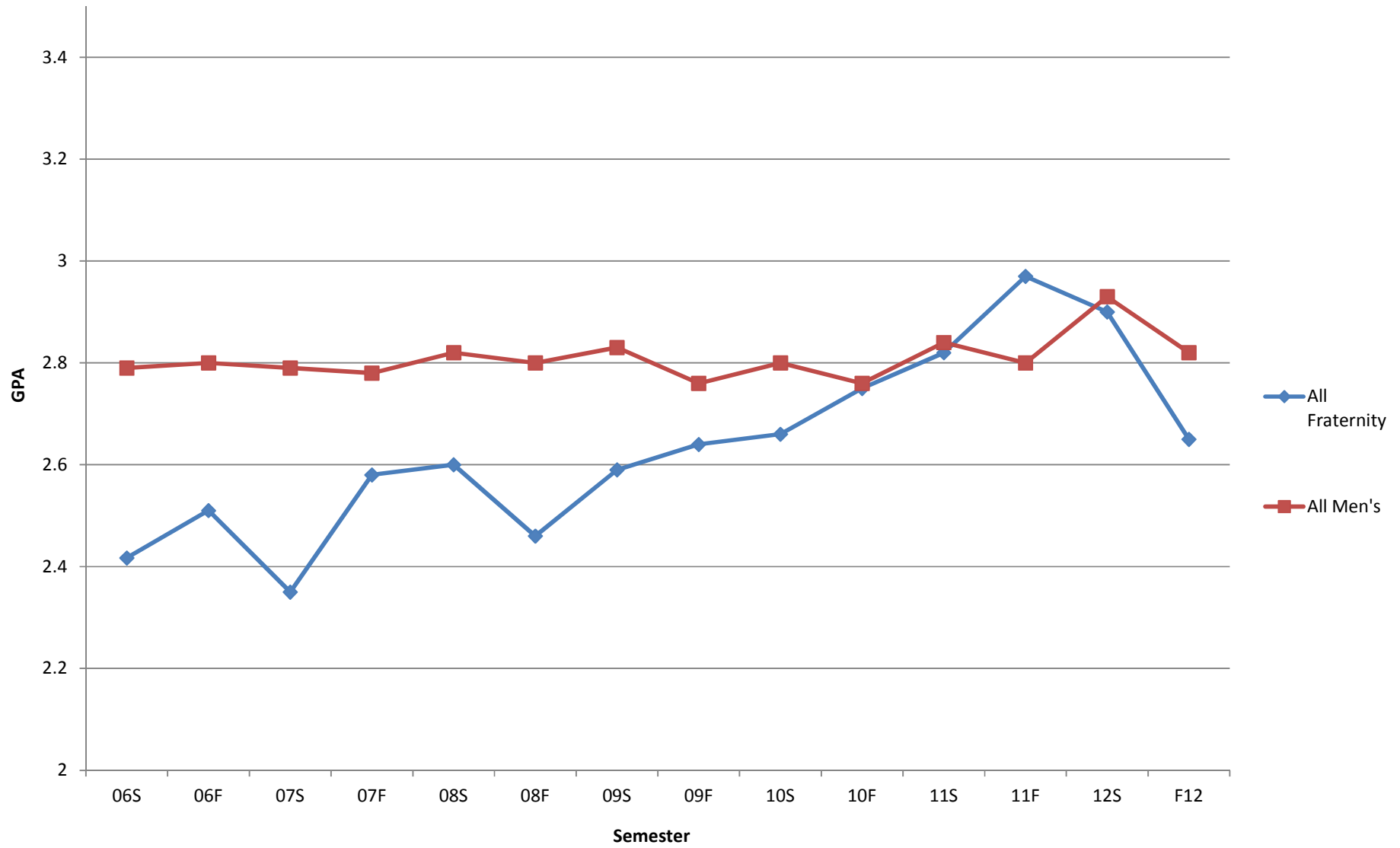
# Group GPA Trends



### All Sorority GPA vs. All Women's GPA

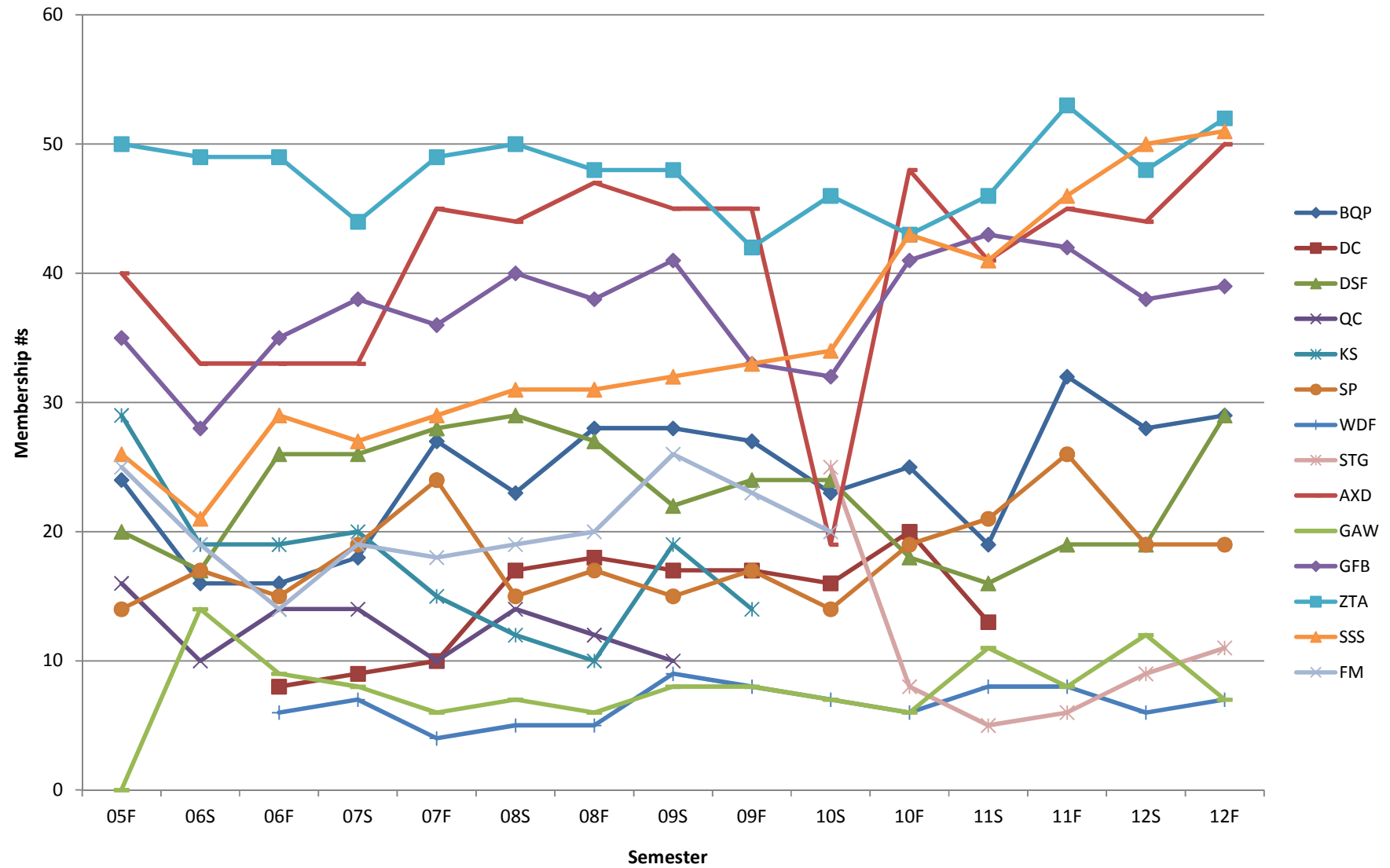


## All Fraternity GPA vs. All Men's GPA

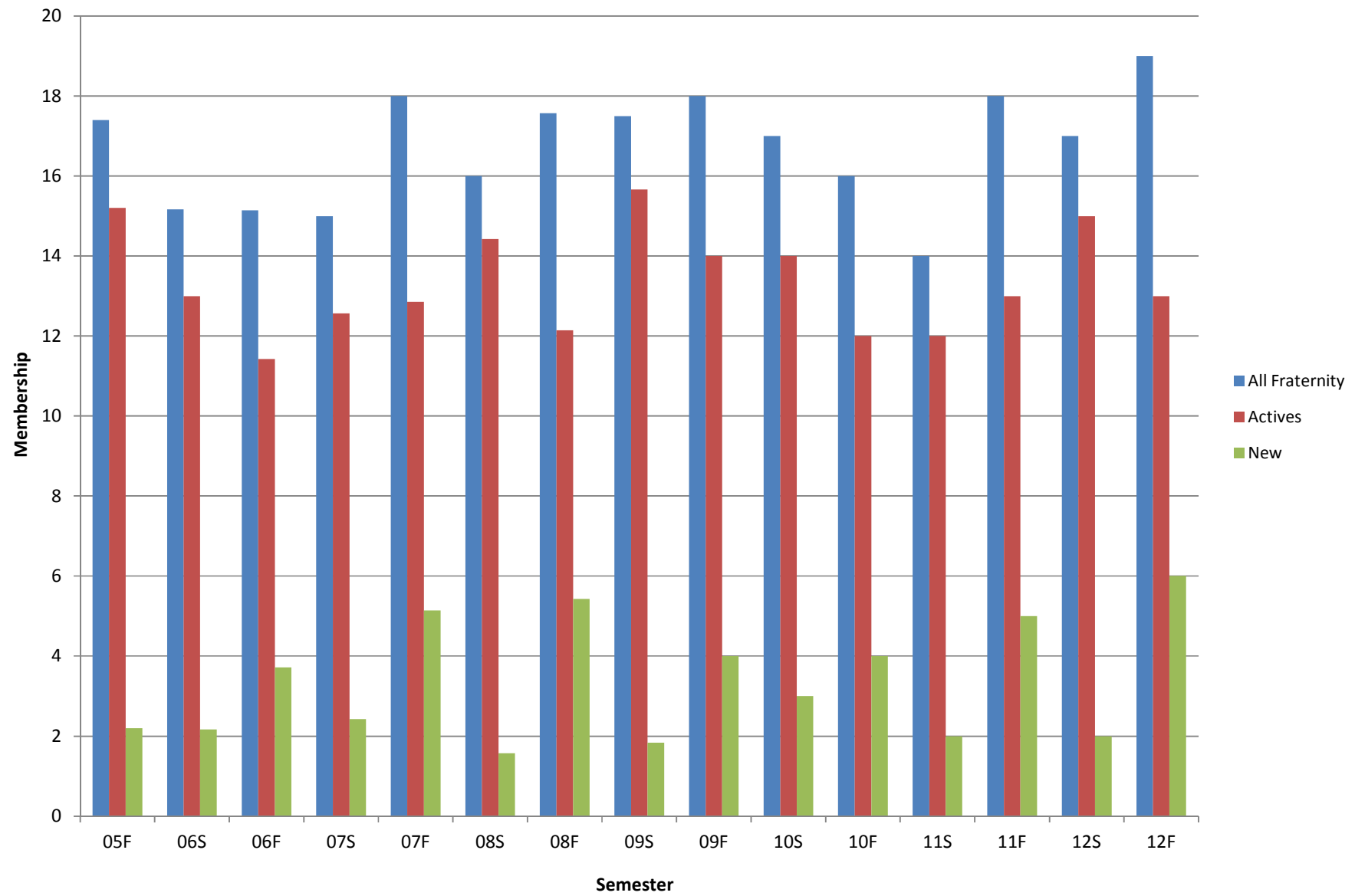


# Membership Trends

## Greek Membership Trends

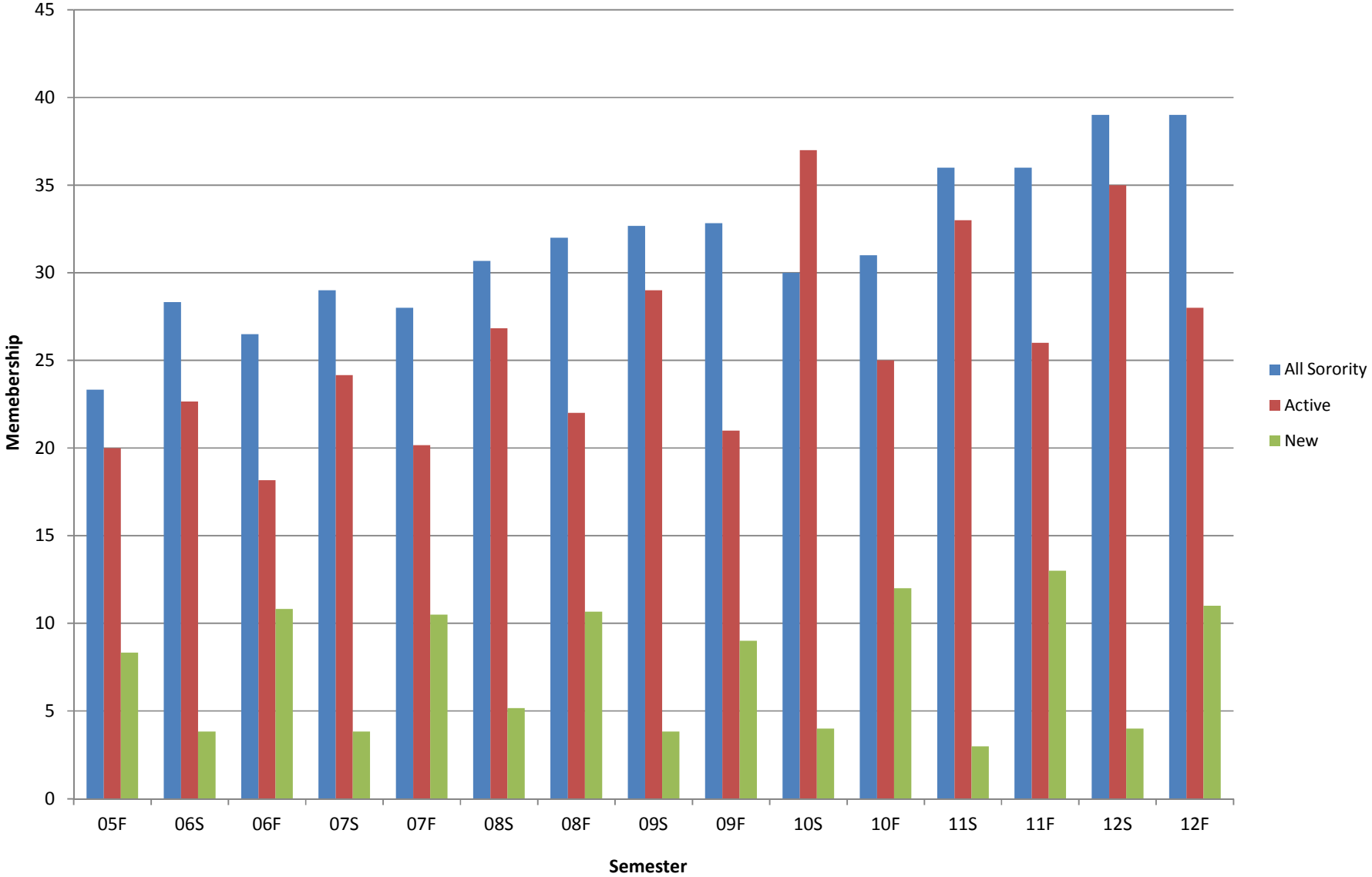


## Average Fraternity Membership Trends





# Average Sorority Membership Trends



## Fall 2012 Community Service/Philanthropy Report

Chapter	Chapter Size	Hours	Money
Beta Theta Pi	29	298	\$0
Delta Sigma Phi	29	360	\$0
Omega Delta Phi	7	104.5	\$0
Sigma Pi	20	157	\$0
Sigma Tau Gamma	11	158	\$0
<b>Totals</b>	<b>96</b>	<b>1077.5</b>	<b>\$0</b>
<b>Average</b>	<b>19.2</b>	<b>215.5</b>	<b>\$0</b>

Sigma Sigma Sigma	51	51.5	\$0
Gamma Alpha Omega	7	955	\$50
Alpha Xi Delta	48	182.8	\$47
Gamma Phi Beta	37	249	\$922
Zeta Tau Alpha	51	316	\$0
<b>Totals</b>	<b>194</b>	<b>1754.3</b>	<b>\$1019</b>
<b>Average</b>	<b>38.8</b>	<b>350.9</b>	<b>\$203.8</b>

<b>Totals</b>	<b>290</b>	<b>2831.8</b>	<b>\$1019</b>
---------------	------------	---------------	---------------

Note: Data comes from chapter reports filed with the Fraternity/Sorority Life Area of Student Leadership & Involvement in Reeve Union. Forms can be found on the Fraternity/Sorority Life Website – [www.reeve.uwosh.edu/greek](http://www.reeve.uwosh.edu/greek)